

JANUARY 2001

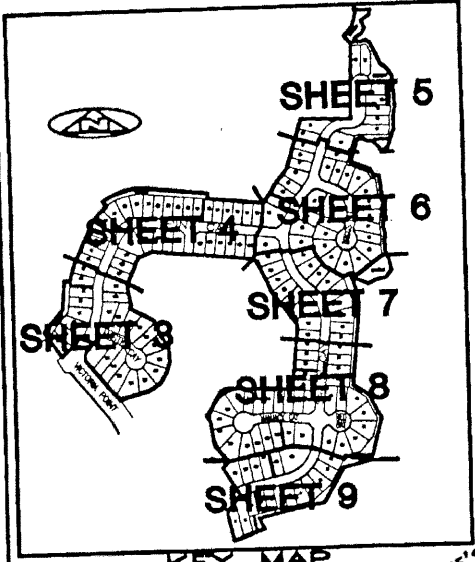
# ANDROS ISLE PARCEL "C"

SHEET 8 of 9

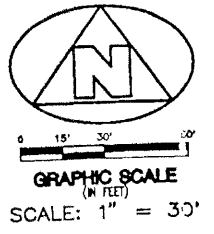
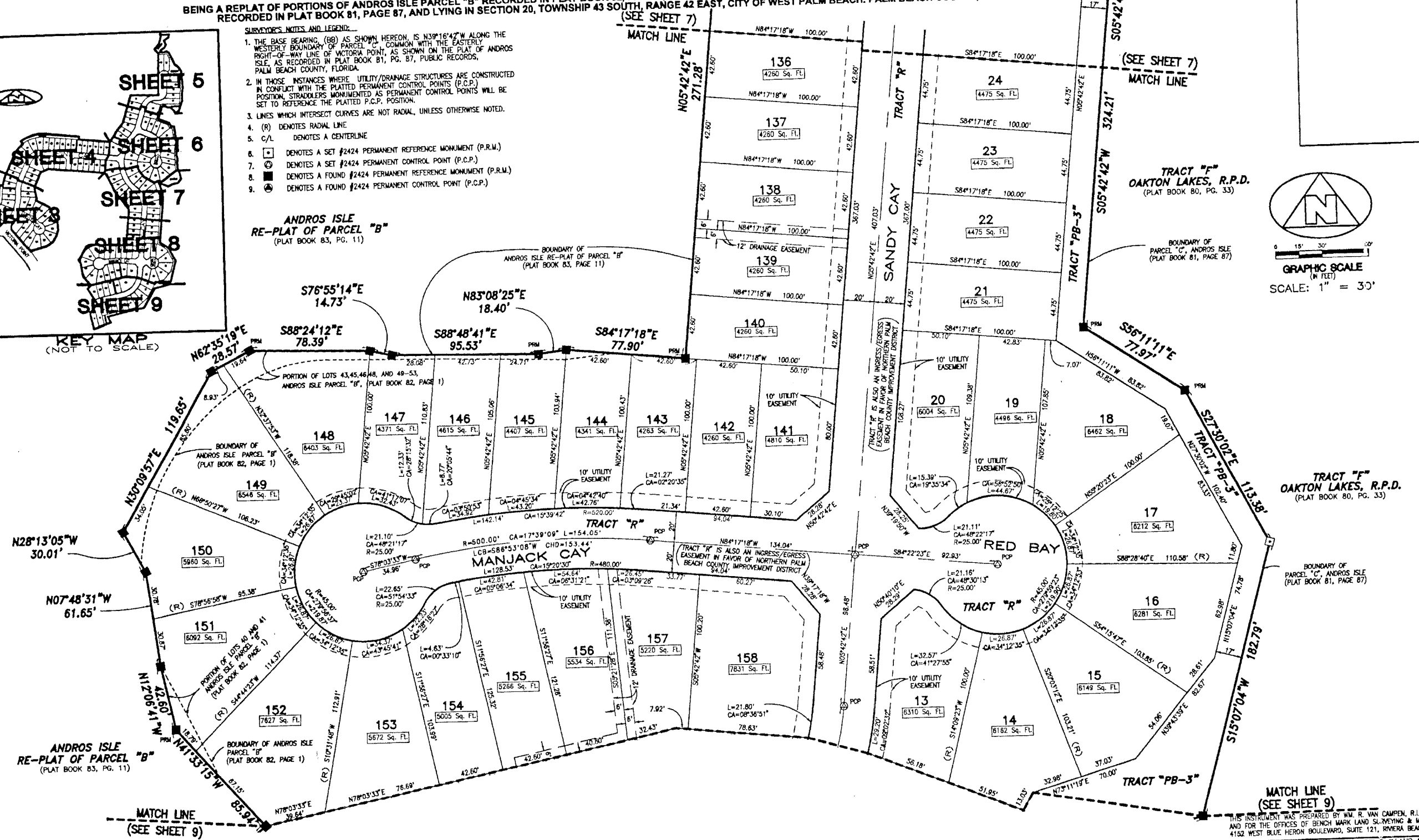
143

(A PART OF A RESIDENTIAL PLANNED DEVELOPMENT)  
BEING A REPLAT OF PORTIONS OF ANDROS ISLE PARCEL "B" RECORDED IN PLAT BOOK 82, PAGE 1, BEING A REPLAT OF PORTIONS OF PARCEL "C", AND TRACT "L-3", ANDROS ISLE, RECORDED IN PLAT BOOK 81, PAGE 87, AND LYING IN SECTION 20, TOWNSHIP 43 SOUTH, RANGE 42 EAST, CITY OF WEST PALM BEACH, PALM BEACH COUNTY, FLORIDA (SEE SHEET 7)

- SURVEYOR'S NOTES AND LEGEND:**
1. THE BASE BEARING, (BB) AS SHOWN HEREON, IS N39°16'42"W ALONG THE WESTERLY BOUNDARY OF PARCEL "C", COMMON WITH THE EASTERLY RIGHT-OF-WAY LINE OF VICTORIA POINT, AS SHOWN ON THE PLAT OF ANDROS ISLE, AS RECORDED IN PLAT BOOK 81, PG. 87, PUBLIC RECORDS, PALM BEACH COUNTY, FLORIDA.
  2. IN THOSE INSTANCES WHERE UTILITY/DRAINAGE STRUCTURES ARE CONSTRUCTED IN CONFLICT WITH THE PLATTED PERMANENT CONTROL POINTS (P.C.P.) POSITION, STRADDLERS MONUMENTED AS PERMANENT CONTROL POINTS WILL BE SET TO REFERENCE THE PLATTED P.C.P. POSITION.
  3. LINES WHICH INTERSECT CURVES ARE NOT RADIAL, UNLESS OTHERWISE NOTED.
  4. (R) DENOTES RADIAL LINE
  5. C/L DENOTES A CENTERLINE
  6. □ DENOTES A SET #2424 PERMANENT REFERENCE MONUMENT (P.R.M.)
  7. ○ DENOTES A SET #2424 PERMANENT CONTROL POINT (P.C.P.)
  8. ■ DENOTES A FOUND #2424 PERMANENT REFERENCE MONUMENT (P.R.M.)
  9. ⊙ DENOTES A FOUND #2424 PERMANENT CONTROL POINT (P.C.P.)



ANDROS ISLE RE-PLAT OF PARCEL "B" (PLAT BOOK 83, PG. 11)



THIS INSTRUMENT WAS PREPARED BY W.M. VAN CAMPEN, R.L.S., IN AND FOR THE OFFICES OF BENCH MARK LAND SURVEYING & MAPPING, INC., 4152 WEST BLUE HERON BOULEVARD, SUITE 121, RIVIERA BEACH, FLORIDA

**BENCH MARK LAND SURVEYING & MAPPING, INC.**  
4152 W. BLUE HERON BOULEVARD • SUITE 121  
RIVIERA BEACH • FLORIDA 33404  
PHONE: (561) 848-2102 • L.B. 2171 • FAX: (561) 844-9558  
EMAIL: bmark@bmark.com WEB: http://members.aol.com/bmark

**RECORD PLAT**  
**ANDROS ISLE PARCEL "C"**

DWN	DJM	FB	DATE 10-1-99	WO.# P300.C
CKD	FILE P300-C2.dwg	SCALE 1" = 30'	SHEET 8 OF 9	